

83200 POWER ACTION CREW instructions

SIZE: 8.25 " X 5.75"

Job No.: F-100-21

DATE: May 12, 2021

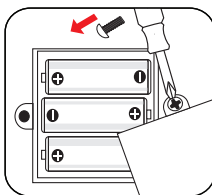
(FRONT)

• POWER ACTION CREW™

THIS PRODUCT REQUIRES 3 "AA" (LR6) BATTERIES (INCLUDED). 1.5V x 3
ALKALINE BATTERIES ARE RECOMMENDED FOR BEST PERFORMANCE.
BATTERIES SHOULD ONLY BE REPLACED BY AN ADULT.

BATTERY REPLACEMENT:
USE A SCREWDRIVER (NOT INCLUDED) TO REMOVE THE BATTERY COVER.
PLACE NEW BATTERIES IN THE BATTERY COMPARTMENT AND REPLACE THE BATTERY COVER.

BATTERY WARNINGS:
USE ONLY BATTERIES OF THE SAME OR EQUIVALENT TYPE AS RECOMMENDED.
DO NOT MIX OLD AND NEW BATTERIES.
DO NOT MIX ALKALINE, STANDARD (CARBON-ZINC), OR RECHARGEABLE BATTERIES.
REMOVE BATTERIES IF PRODUCT IS TO BE LEFT UNUSED FOR A LONG TIME.
NON-RECHARGEABLE BATTERIES ARE NOT TO BE RECHARGED.
BATTERIES ARE TO BE INSERTED WITH THE CORRECT POLARITY (+ AND -).
EXHAUSTED BATTERIES ARE TO BE REMOVED FROM THE TOY.
THE SUPPLY TERMINALS ARE NOT TO BE SHORT-CIRCUITED.
RECHARGEABLE BATTERIES ARE TO BE REMOVED FROM THE TOY BEFORE BEING CHARGED.
RECHARGEABLE BATTERIES ARE ONLY TO BE CHARGED UNDER ADULT SUPERVISION.



EXCAVATOR



DUMP TRUCK

Warning! Not suitable for children under 36 months. Small parts. Choking hazard.

WARNING:
CHOKING HAZARD— Small parts.
Not for children under 3 years.



PRODUCT AND COLORS MAY VARY.
SUBJECT TO TECHNICAL CHANGE AND CHANGE OF COLOR.



www.cat.com / www.caterpillar.com © 2021 Caterpillar.
All Rights Reserved. CAT, CATERPILLAR, LET'S DO THE WORK, their respective logos, "Caterpillar Yellow", the "Power Edge" and Cat "Modern Hex" trade dress as well as corporate and product identity used herein, are trademarks of Caterpillar and may not be used without permission.
Funrise Inc., a licensee of Caterpillar Inc.

* All instruction sheets must be retained since it contains important information.



(BACK)

PRESS TO OPEN CAB

PRESS FIGURE FIRMLY IN SEAT TO START VEHICLE

PRESS FIGURE FIRMLY IN SEAT TO RESTART VEHICLE

PRESS TO OPEN THE TOOL BOX

MOVE TO ACTIVATE HYDRAULIC SOUNDS

