

FRONT



3+

THIS PRODUCT REQUIRES 3 "AAA" (LR03) BATTERIES (INCLUDED). 1.5V x 3
 ALKALINE BATTERIES ARE RECOMMENDED FOR BEST PERFORMANCE.
 BATTERIES SHOULD ONLY BE REPLACED BY AN ADULT.

BATTERY REPLACEMENT:
 USE A SCREWDRIVER (NOT INCLUDED) TO REMOVE THE BATTERY COVER.
 PLACE NEW BATTERIES IN THE BATTERY COMPARTMENT AND REPLACE THE BATTERY COVER.

BATTERY WARNINGS:
 USE ONLY BATTERIES OF THE SAME OR EQUIVALENT TYPE AS RECOMMENDED.
 DO NOT MIX OLD AND NEW BATTERIES.
 DO NOT MIX ALKALINE, STANDARD (CARBON-ZINC), OR RECHARGEABLE BATTERIES.
 REMOVE BATTERIES IF PRODUCT IS TO BE LEFT UNUSED FOR A LONG TIME.
 NON-RECHARGEABLE BATTERIES ARE NOT TO BE RECHARGED.
 BATTERIES ARE TO BE INSERTED WITH THE CORRECT POLARITY (+ AND -).
 EXHAUSTED BATTERIES ARE TO BE REMOVED FROM THE TOY.
 THE SUPPLY TERMINALS ARE NOT TO BE SHORT-CIRCUITED.
 RECHARGEABLE BATTERIES ARE TO BE REMOVED FROM THE TOY BEFORE BEING CHARGED.
 RECHARGEABLE BATTERIES ARE ONLY TO BE CHARGED UNDER ADULT SUPERVISION.

• All instruction sheets must be retained since they contain important information.
 © 2025 Funrise. All Rights Reserved.



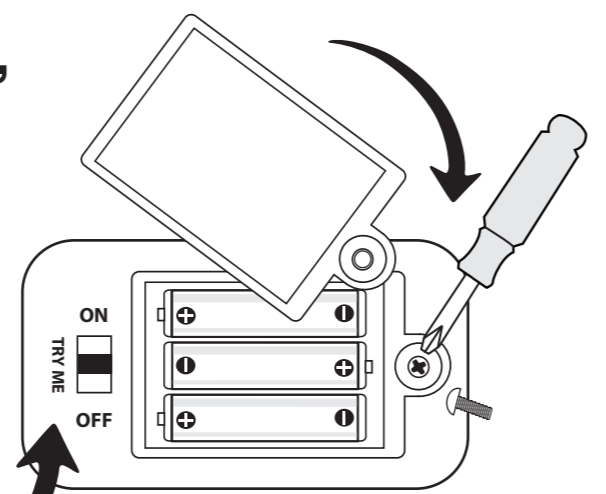
1 On the bottom of Furling, open cover with Phillips head screwdriver

2 Insert 3 NEW AAA batteries and replace cover

3 Push switch to "ON" position from "TRY ME"

4 Press **BELLY** to **START** the **FUN!** (and wake me up when I go to sleep!)

5 **SCAN** code to **discover more ways to PLAY!**



www.furlingstoys.com

BACK



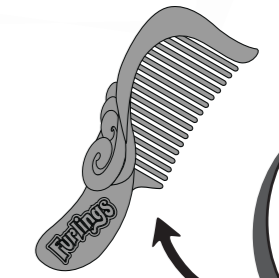
EARS:
Squeeze and tug for growls!



SHAKE and THROW
For giggles and laughs!



TAIL:
Wrap to hang upside-down!



COMB INCLUDED
to groom and style



HAND:
Press for purrs and hums!

PRESS BELLY to START!
(and wake)



NOSE:
Press for sneezes and roars!

BACK:
Press to coo and sing!



www.furlingstoys.com